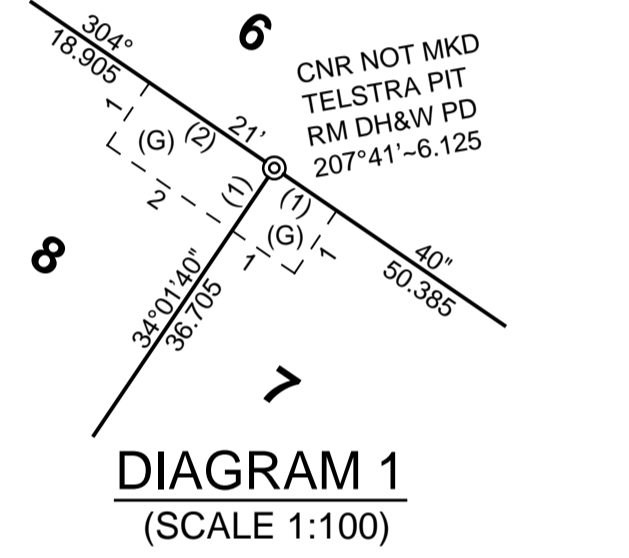
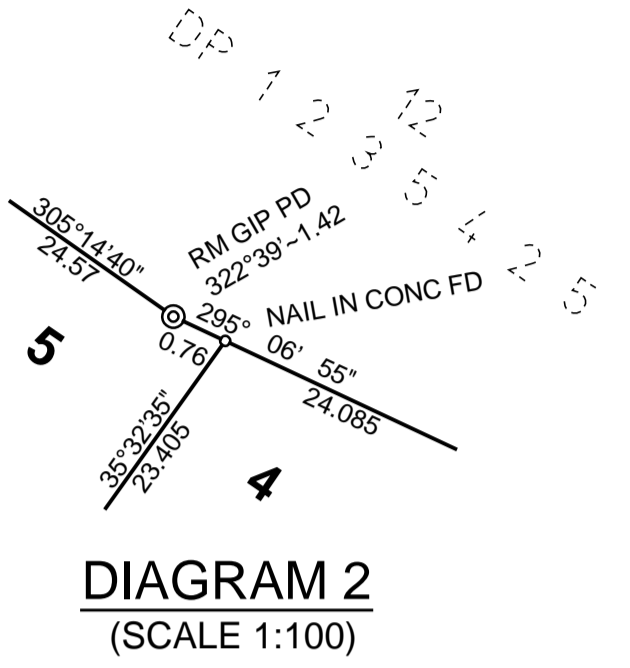
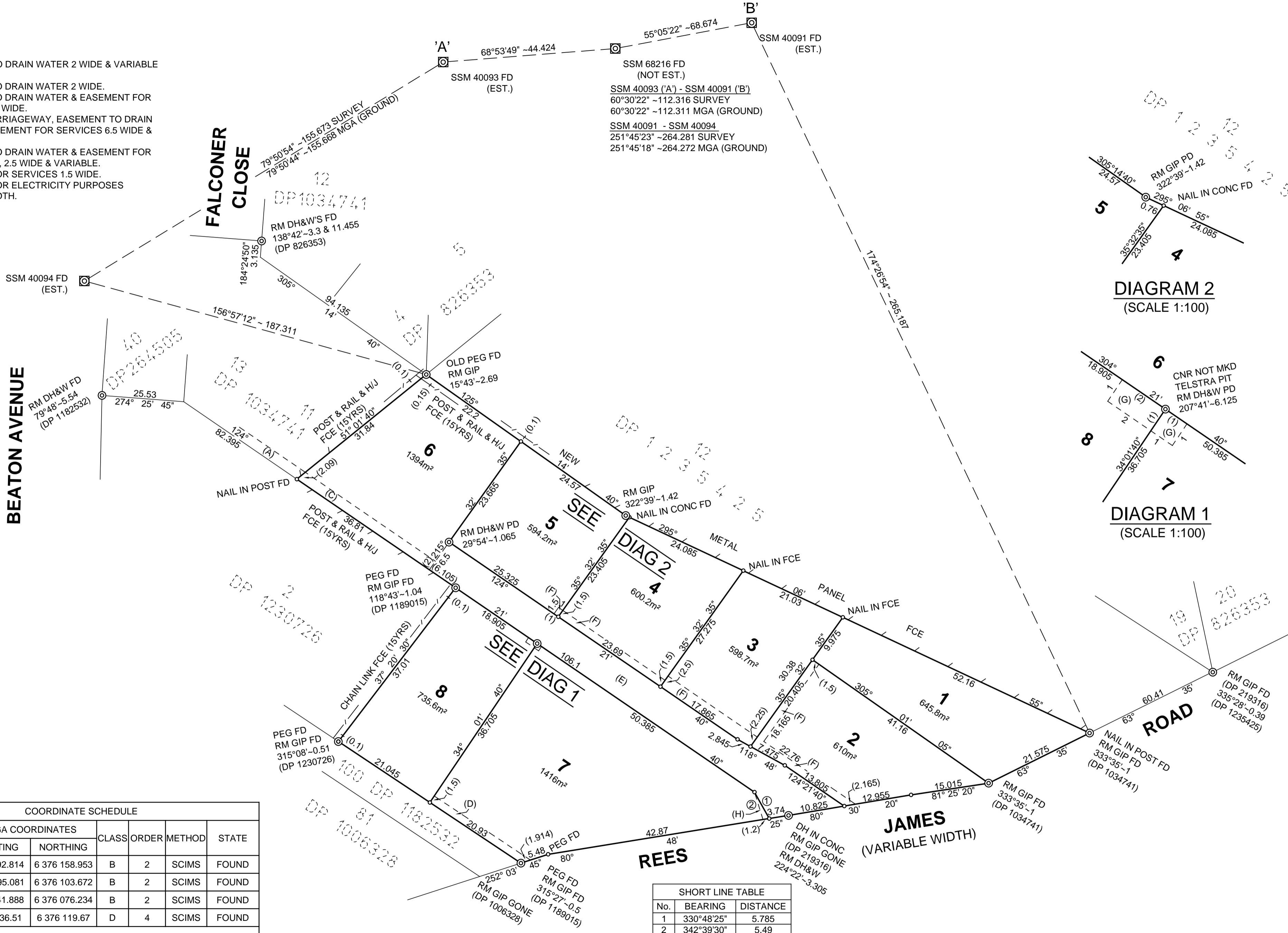


- (A) EASEMENT TO DRAIN WATER 2 WIDE & VARIABLE (DP 1034741).
- (C) EASEMENT TO DRAIN WATER 2 WIDE.
- (D) EASEMENT TO DRAIN WATER & EASEMENT FOR SERVICES 1.5 WIDE.
- (E) RIGHT OF CARRIAGEWAY, EASEMENT TO DRAIN WATER & EASEMENT FOR SERVICES 6.5 WIDE & VARIABLE.
- (F) EASEMENT TO DRAIN WATER & EASEMENT FOR SERVICES 1.5, 2.5 WIDE & VARIABLE.
- (G) EASEMENT FOR SERVICES 1.5 WIDE.
- (H) EASEMENT FOR ELECTRICITY PURPOSES VARIABLE WIDTH.



COORDINATE SCHEDULE						
MARK	MGA COORDINATES		CLASS	ORDER	METHOD	STATE
	EASTING	NORTHING				
SSM 40091	384 192.814	6 376 158.953	B	2	SCIMS	FOUND
SSM 40093	384 095.081	6 376 103.672	B	2	SCIMS	FOUND
SSM 40094	383 941.888	6 376 076.234	B	2	SCIMS	FOUND
SSM 68216	384 136.51	6 376 119.67	D	4	SCIMS	FOUND

DATE OF SCIMS COORDINATES: 15/10/2017 MGA ZONE: 56  
MGA DATUM: GDA94 COMBINED SCALE FACTOR 0.999760

SHORT LINE TABLE		
No.	BEARING	DISTANCE
1	330°48'25"	5.785
2	342°39'30"	5.49

SURVEYOR : Name : CRAIG WILLIAMSON LE MOTTEE GROUP PTY LTD PO BOX 363, RAYMOND TERRACE 2324 Date : 17/10/2017 Reference: 5182 DP-V1	PLAN OF SUBDIVISION OF LOT 1 & 2 DP 1189015	LGA: PORT STEPHENS Locality : RAYMOND TERRACE Reduction Ratio: 1: 500 Lengths are in metres	REGISTERED  DP
--	---	--	----------------------